



Xerox® Colour 560/570 Printer  
Productivity plus outstanding  
colour for all environments.



## Productivity, scalability and professional image quality, all-in-one.

The Xerox® Colour 560/570 Printer provides application versatility and professional image quality, and is flexible enough to grow with your business. It's an all-in-one solution that can boost productivity in any environment.

### Xerox® Colour 560/570 Printer Quick Facts

- **Speed:** Up to 60/70 ppm colour and 65/75 ppm black and white
- **Resolution:** 2400 x 2400 dpi
- **Toner:** Xerox® Emulsion Aggregation (EA) Toner with ultra-low melt technology
- **Media Weights (Maximum):** Up to 300 gsm and up to 220 gsm for auto duplexing most stocks
- **Media Sizes:** Up to SRA3+ / 330 x 488 mm

### A flexible and affordable solution from the start.

Your teams want the flexibility and productive workflow of a multifunction device. Your graphics, creative and production teams want a higher level of quality and finishing. The Xerox® Colour 560/570 Printer offers the best of all worlds.

The Xerox® Colour 560/570 allows you to print, copy, fax (optional), and scan – including scan and print with PC, USB or email. It can even print from virtually any smart phone or tablet. That's how the Xerox® Colour 560/570 boosts any team's efficiency.

### Capture new business and keep high-value colour printing in-house.

- Print at up to 60/70 pages per minute colour and up to 65/75 pages per minute black and white. And with easy set-up and automated workflows, you can handle quick turnarounds in style.

- Media versatility – both coated and uncoated stocks up to 300 gsm.
- Inline finishing options offer a professional polish with stapling, hole-punching, folding and face trimming for presentations, brochures and reports.
- A choice of print servers allows you to boost colour management and streamline labour-intensive processes.
- Variable data capabilities let you capitalise on personalised applications for direct mail.

### Exceed expectations.

The Xerox® Colour 560/570 Printer is engineered to bring out the best in digital printing. Whether you need to create a customer brochure, a captivating proposal or presentation, an eye-catching poster, or even window stickers or polyester signs, you get stunning results every time.

# Transform – and work simpler, smarter.

**When work gets simpler, people are more productive.** The Xerox® Colour 560/570 Printer simplifies the process of capturing, editing and storing documents – all the tools you need to get quality work done more efficiently.

## Capture productivity with scanning and faxing\*.

- **True multitasking.** Scan, print, copy, fax\* or route files, all at once. Preview scans and fax\* images on-screen and avoid mistakes.
- **Save time and steps.** The Xerox® Colour 560/570 offers superior scanning and allows you to send the files anywhere. Email lists, store on-board, send to a PC, server, USB or fax\*. Create a searchable PDF in one simple step.

## Extend your possibilities and transform the way you get work done with the power of Xerox® Workflow Solutions.

- **Xerox® ConnectKey™ for SharePoint.** Scan files directly into Microsoft® SharePoint® and other Windows® folders. Plus, you'll go beyond basic file storage by converting documents to intelligent data and apply SharePoint policies to your data. Learn more at [www.xerox.com/connectkeysharepoint](http://www.xerox.com/connectkeysharepoint).
- **Xerox® Scan to PC Desktop®.** Bridge the gap between Microsoft® Office® documents, PDFs and paper. Scan to PC Desktop allows you to customise scanning menus on your Xerox® Colour 560/570 directly from your desktop. Learn more at [www.xerox.com/scantopcdesktop](http://www.xerox.com/scantopcdesktop).
- **Xerox® Mobile Print.** Xerox has all the options to enable secure, accurate printing from any Apple® iOS®, Android™ and BlackBerry® mobile devices. Learn more at [www.xerox.com/mobileprint](http://www.xerox.com/mobileprint).

## Secure and confident.

- **Full system Common Criteria (ISO 15408) Certification at EAL3** (pending). This ensures the Xerox® Colour 560/570 Printer conforms to the most stringent security standards.
- **Secure Print.** Keep documents private by holding print jobs in the queue until the user enters the password.
- **Password protected PDFs.** This features requires a password to open and view a sensitive scan.
- **Standard 256-bit and FIPS 140-2 encryption.** The gold standard in keeping your data secure – Image Overwrite. Automatically erases images on the device.

## Control and track costs easily.

- **Xerox® Standard Accounting (XSA).** This software is a standard feature that resides locally on the device. It provides superior accounting features that lets you track, analyse and limit device usage. It lets you know where your costs are coming from so you can take control of them.
- **Equitrac Office®.** Provides a secure, convenient, mobile print workflow while controlling costs and simplifying administration (optional). Learn more at [www.xerox.com/equitracoffice](http://www.xerox.com/equitracoffice).
- **Xerox Secure Access Unified ID System®.** Integrates with your existing employee ID badge solution, allowing users to unlock access to system features via badge proximity or swiping (optional). Learn more at [www.xerox.com/secureaccess](http://www.xerox.com/secureaccess).

\* Optional







# Promote your image and stand out from the crowd.

Benchmark image quality that you expect. Results that truly delight.

## Innovation comes standard.

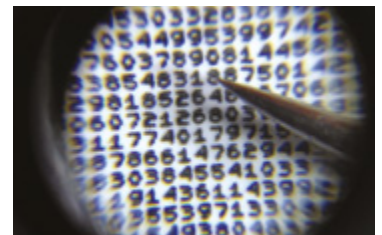
- **Vibrant colour and incredible detail.** With our 2400 x 2400 dpi resolution, images are rich with crisp text so your output will always impress.
- **Excellent image quality.** Our Xerox® Emulsion Aggregation (EA) Low Melt Toner technology is chemically grown, so the small, consistent particles produce great quality with smooth transitions and an offset-like finish.
- **Keep jobs moving.** All printers have components that eventually wear out, but with Xerox® Smart Kit® Customer Replaceable Units, you can keep moving without a service call. Simple slide-in and slide-out replacement units keeps you up and running. Smart Kits include drum rolls, fuser, charge corotron assembly and waste toner bottle.

## It's your image. Unleash your creativity.\*

- **Match company colours and logos.** The Xerox® Colour 560/570 Printer offers licensed PANTONE® matching for spot colours to the PANTONE MATCHING SYSTEM®, PANTONE GOE™ and PANTONE PLUS.
- **True Adobe® PostScript® 3™ certification and the latest Adobe PDF Print Engine (APPE).** These features plus high speeds means your creativity is never restricted.

## Total control, when you need it most.

- **Advanced registration technology.** Bring tighter control (edge, skew correction) to your critical projects.
- **Customise your settings.** Custom paper setup lets you create, store, and retrieve unique paper profiles that can be used whenever you need them.



**Xerox® Colour 560/570 Printer:**  
0.6 point font Xerox® MicroFont  
pictured with a pin.

We've combined class-leading print resolution (2400 x 2400 dpi) and the unique properties of Xerox® EA Toner with ultra-low melt technology. The result is stunning detail and an offset-like finish and vibrant colour. This also allows for outstanding performance on new substrates such as Xerox® NeverTear, digital synthetics, polyesters and more.

# Whatever the size and scope of your work, we'll fit your needs.

## Finishing Options



**1**  
**Offset Catch Tray:** 500 sheet stacking.

**2**  
**Advanced Finisher:** Ideal for basic binders, manuals, reports and presentations. This finishing option offers 50-sheet, multi-position stapling and 2 or 4 hole punching.

**3**  
**Professional Finisher:** The choice for uncoated, manuals, etc. In addition to the features of the Advanced Finisher, this finisher includes saddle stitching with centre fold for easy booklet making for up to 15-sheet coated booklets and bi-fold brochure assembly.

**4**  
**GBC® AdvancedPunch™<sup>1</sup>:** Lets you create professionally bound documents in-house by combining printing, punching and collating into one convenient step.

**5**  
**Light-Production Finishers<sup>2</sup> –** These versatile finishing options enable coated booklets, brochures and bi-fold mailers as well as stacking, stapling and hole punching. They also include an interposer input tray. Choose from a Light Production Finisher, Light Production Finisher with Booklet Maker or a Light Production Finisher with Booklet Maker and Folder.

**6**  
**Xerox® SquareFold® Trimmer Module<sup>1</sup>:** Enhances the power of the Light Production Finisher with booklet maker with square fold of cover sheets and face trimming to produce booklets.

<sup>1</sup> Requires Interface Module and Light Production Finisher

<sup>2</sup> Interface module required.

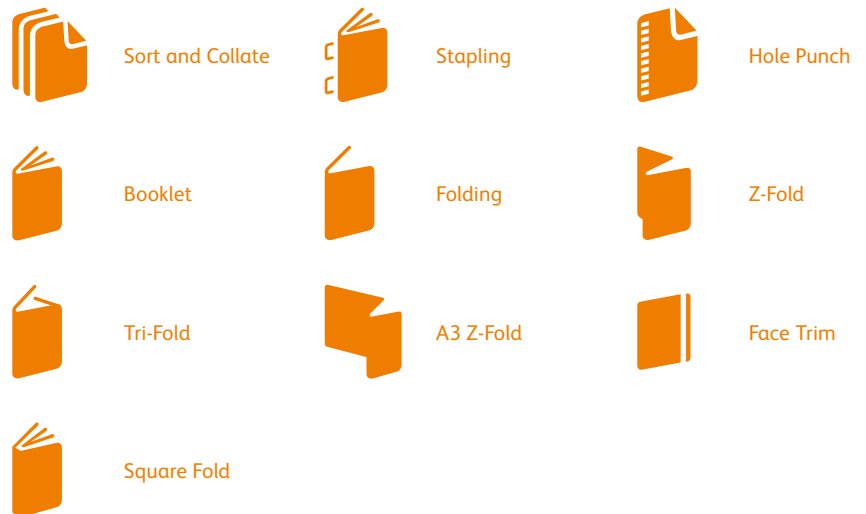
## Feeding Options



**7**  
**High-Capacity Feeder:** Holds up to 2,000 A4 sheets in a wide range of weights.

**8**  
**Oversized High-Capacity Feeder:** Adds capacity with either one or two media selection points for large SRA3 / 330 x 488 mm and up to 2,000 or 4,000 sheet capacity.

## Finishing Applications

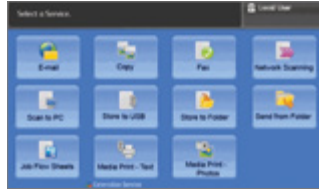


# Print servers to fit every workflow.

We offer a choice of print servers, so you're sure to find one that fits.

## Xerox® Integrated Servers

Count on superior colour and high-end workflows.



### The Xerox® Integrated Colour Server

Standard with every Xerox 560/570 and ideal for high-end office applications, you will be delighted with unrivalled simplicity and value with a familiar touch screen. Learn more at [www.xerox.com/560integrated-colorserver](http://www.xerox.com/560integrated-colorserver).

### The Xerox® EXi Integrated Fiery® Colour Server

World-class colour and workflow tools that put you in command. Learn more at [www.xerox.com/560exi-fierycolorserver](http://www.xerox.com/560exi-fierycolorserver).

## Xerox® External Servers

Powerful servers with colour tools, workflow capabilities, and high speed, all at your fingertips.



### Xerox® EX Print Server, Powered by Fiery®

Fiery technology increases your profits by delivering high-impact documents with vibrant images and colour that exceed your customers' expectations. Learn more at [www.xerox.com/560ex-printserver](http://www.xerox.com/560ex-printserver).

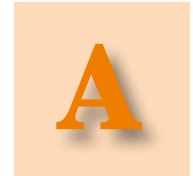
### Xerox® FreeFlow® Print Server

The Xerox® FreeFlow Print Server brings together a sophisticated blend of enterprise and production workflows. Delivers robust queue management, ConfidentColour technology and variable printing. Learn more at [www.xerox.com/560freeflow-printserver](http://www.xerox.com/560freeflow-printserver).

Before



After



Transparency Handling

Before



After



Spot Colour Callouts

The Adobe PDF Print Engine – or APPE – is the gold standard in PDF processing, producing PDF files that flow through your shop with a minimum of intervention. No more transparency problems. No more colour matching challenges. Instead, you will see faster turnarounds, more accurate results – and more returning customers.



# Create exciting new applications – easily finished inline.

The printing world is exploding with new applications and new ways to use colour, media and finishing. The superb image quality, robust media latitude, flexible finishing options, modularity and server options of the Xerox® Colour 560/570 Printer, integrated with enterprise workflows, make it the perfect device for capturing new business, keeping more applications in-house.

## Speciality media for special results.

The Xerox® Colour 560/570 was designed with media latitude in mind.

Delight your customers with finished proposals, compelling brochures, and also take advantage of the new and exceptional media capability and truly stand out.

The Xerox® 560/570 allows you to think big. Signs, ID Cards, Window Clings, Labels, Polyester Synthetics and more.

Run reliably on many of today's digital specialty substrates like Xerox® Premium NeverTear digital synthetics and more.

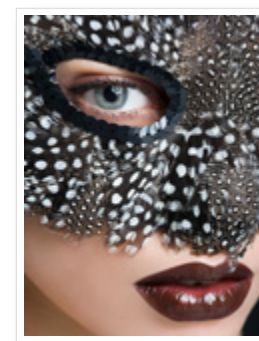
With our special polyester EA Low Melt Toner, the output fuses to polyester in a chemically bonding way, ensuring outstanding image quality on specialty substrates such as polyester and more – allowing you to offer a broader set of media choices. Premium NeverTear is water, oil, grease and tear resistant.



Xerox® NeverTear Window Signs

## Production printing with enterprise workflows at an affordable price.

Image quality, ease of use, productivity, media latitude, feeding and finishing options, plus world-class workflow solutions are at your fingertips. Grow your digital colour printing capabilities and reduce costs with the Xerox® Colour 560/570 Printer.



- **Brochures** – easily create professional, colourful brochures with productivity-boosting inline folding and square fold trimming.
- **Presentations / Newsletters** – inline stapling and hole punching makes producing presentations and newsletters quick and easy.
- **Manuals and Reports** – inserted tabs keep annual reports and financial reports organised, while stapling and GBC AdvancedPunch hole-punching keep pages secure.
- **Posters** – expanded media range lets you run eye-catching posters on sturdy coated media – up to SRA3+.
- **Specialty Media and Photo Specialty applications** – impeccable colour and photo-finish image quality will keep customers coming to you for all today's latest photo applications



## Resolution

- Print / Copy: 2400 x 2400 dpi; Scan: 200 x 200, 300 x 300, 400 x 400, 600 x 600
- Line Screens: 600, 300, 200 and 150 Clustered Dot, 200 Rotated Line Screen<sup>1</sup>
- Controller Print path: 600 x 600 x 8 dpi

## Technology

- Print, Fax (optional), Copy, Scan, Preview, Email
- Load-while-run toner and paper capability
- Advanced Registration Technology for tighter control, ±1.2 mm along lead edge, front to back
- Custom paper set-up / alignment profiles
- Xerox® EA Low Melt Toner
- Xerox® Smart Kit® replaceable units for toners, drums, fuser, charge corotron, waste bottle, staples

## Graphic Arts Credentials<sup>2</sup>

- Fogra certification, PANTONE Matching System®, PANTONE GOE, PANTONE Plus, Adobe PDF Print Engine<sup>1</sup>

## Integrated Scanner

- 250 sheet capacity
- 50 ppm colour / 65 ppm b/w in copy mode; 50 ppm colour / 80 ppm b/w in network scanning mode
- Originals up to A3 in weights from 38-105 gsm
- Duplex Automatic Document Feeder (DADF)

## Productivity / Print Speeds

- Duty Cycle<sup>3</sup>: 300,000
- AMPV<sup>4</sup>: 10,000 to 50,000 pages per month

### Xerox® Colour 560/570 Colour

- A4
  - 60/70 ppm (64-105 gsm) uncoated
  - 43/50 ppm (106-176 gsm) uncoated, (106-150 gsm) coated
  - 30/35 ppm (177-300 gsm) uncoated, (151-300 gsm) coated
- A3
  - 30/35 ppm (64-105 gsm) uncoated
  - 21/25 ppm (106-176 gsm) uncoated, (106-150 gsm) coated
  - 14/17 ppm (177-300 gsm) uncoated, (151-300 gsm) coated
- SRA3
  - 27/30 ppm (64-105 gsm) uncoated
  - 19/19 ppm (106-176 gsm) uncoated, (106-150 gsm) coated
  - 12/12 ppm (177-300 gsm) uncoated, (151-300 gsm) coated

### Xerox® Colour 560/570 Black and White

- A4
  - 65/75 ppm (64-176 gsm) uncoated
  - 43/50 ppm (177-300 gsm) uncoated, face-up (106-176 gsm) coated
  - 30/35 ppm (177-300 gsm) coated
- A3
  - 33/37 ppm (64-176 gsm) uncoated, face-up
  - 21/25 ppm (177-300 gsm) uncoated, (106-176 gsm) coated
  - 14/17 ppm (177-300 gsm) coated
- SRA3
  - 29/33 ppm (64-176 gsm) uncoated
  - 19/19 ppm (177-300 gsm) uncoated, face-up (106-176 gsm) coated
  - 12/12 ppm (177-300 gsm) coated

## Paper

### Flexibility / Weights

- Internal Trays 64-220 gsm uncoated and coated
  - Tray 1: 500 sheets SRA3, Tray 2: 500 sheets A3, Tray 3: 870 sheets A4, Tray 4: 1140 sheets A4
- Bypass 250-sheet up to 300 gsm uncoated and coated, up to 330 x 482 mm
- Optional 2,000 sheets HCF & OHCF (1 or 2 tray)

### Capacity and Handling (A4)

- 3,260 sheets std / 7,260 max
- Two-sided printing:
  - 176 gsm auto duplex for all stocks
  - 220 gsm auto duplex for most stocks (A4, A3)
  - 320 gsm manual duplex for all stocks from bypass trays and optional Oversized High Capacity Feeder

## Feeding and Finishing Options

### High-Capacity Feeder (HCF)

- A4 2,000 sheets up to 220 gsm
- 1 or 2 tray Oversized High-Capacity Feeder (OHCF)
  - 64-300 gsm uncoated, 106-300 gsm coated
  - 182 x 250 mm – B5 to SRA3 / 330 x 488 mm
  - One or two tray module: 2,000 sheets / 4,000 sheets
  - Envelope and Small Media support included with 2 tray OHCF

### Simple Catch Tray/Offset Catch Tray

- 500 sheet stacking

### Advanced Finisher

- 500 sheet top tray, 3,000 sheet stacker tray
- Multi-position stapling, up to 50 sheets, hole punching

### Professional Finisher

- 500 sheet top tray, 1,500 sheet stacker tray
- Stapling, up to 50 sheets, hole punching
- Bi-fold, saddle stitch booklet maker up to 15 uncoated sheets, 7 sheets at 106-176 gsm coated, 5 sheets at 177-220 gsm coated

### Interface Module

- Required for Light Production Finishers. Provides built-in decurling for coated/heavy weight media.

### Light Production Finisher

- 500 sheet top tray, 3,000 sheet stacker tray
- Multi-position hole punching and stapling, quad/4 staples
- Stapling, up to 100 sheets
- 200 sheet interposer for preprinted and full bleed sheets

### Light Production Finisher with Booklet Maker – includes all features of the Light Production Finisher plus:

- Bi-fold or saddle-stitch booklet up to 25 sheets (100 imposed pages of 75 gsm media)

### Light Production Finisher with Booklet Maker and Folder – includes all the features of Light Production Finisher & Booklet Maker plus:

- Optional Folding Module for A3/A4 tri/Z-fold

## GBC AdvancedPunch™<sup>5</sup>

- Punch configurations available in A4
- Various interchangeable die sets included
- Xerox® SquareFold® Trimmer Module<sup>5</sup>
- Square fold up to 25 sheets
- Face trim between 2-20 mm in 0.1 mm increments
- Paper weights 64-300 gsm coated and uncoated
- Convenience Stapler
- Staple up to 50 sheets of 90 gsm media

## Xerox® Integrated Colour Server (standard)

### Hardware Specifications (equal or better)

- 80 GB Hard Disk Drive, 2 GB RAM
- 10.4 in. colour, touch screen flat-panel display
- Ethernet interface (10 MBTX / sec, 100 MBTX / sec, 1000 MBTX / sec option)

### Client Environments Supported

- Windows® XP SP1 & above (32 & 64 bit), Server 2003/2008 (32 & 64 bit), Vista (32 & 64 bit), Windows 7 (32 & 64 bit), Mac OS® 10.4 and above, Citrix, Custom driver for Unix: AIX® 5 v5.3, HP-UX® 11.0/11i v2, Solaris® 8/9/10, Linux Fedora Core® 1/5, Red Hat ES4, SUSE® 10/11
- Citrix, WHQL certification<sup>1</sup>

### PDLs and Data Formats

- PDF, XPS®, PCL® 6 emulation, HP-GL2 (direct submission), Adobe® PostScript® 3™ option, TIFF, JPEG

### Scan

- Scan to Email, Scan to Folder, to PC, to Mailbox (private and public), options include Scan to USB, FTP, SMB, Desk, Text searchable PDF, PDF/A, XPS, Thumbnail Preview

### Security

- Standard Secure Print, Authentication with LDAP/Kerberos/SMB/CAC, Password Protected PDF, FIPS 140-2 encryption, S/MIME Encrypted Email, IPsec, 802.1X, SNMP v3.0, Email over SSL, Image Overwrite (Immediate, Scheduled, On Demand) Hard Disk Data Encryption, Audit Log Optional CAC, Xerox Secure Access Unified ID System®, IPv6 Ready, 256 Bit Encryption, Common Criteria Certified<sup>6</sup>

### Other Options

- USB, Media Card Reader, Common Access Card Enablement Kit, Accounting Options, Extensible Interface Platform Enabled (EIP), Foreign Device Interface, Mobile / Smartphone Print

## Optional Print Servers

### Xerox® FreeFlow® Print Server

### Xerox® EXi Integrated Fiery® Colour Server

### Xerox® EX Print Server, Powered by Fiery®

## Electrical Requirements

- Printer: 220 - 240 VAC, 50/60 Hz
- Options: 100-240 VAC, 50/60 Hz
- Optional Feeding / Finishing:
  - Each module requires 100-240 VAC, 50/60 Hz power

## Printer Dimensions

- Height: 1,391.5 mm, Width: 1,574 mm, Depth: 803 mm

<sup>1</sup> Depending on Print Server Selected

<sup>2</sup> Requires a Print Server (e.g. FreeFlow or EFI)

<sup>3</sup> Duty Cycle – Maximum volume capacity expected in any one month. Not expected to be sustained on a regular basis.

<sup>4</sup> Average Monthly Print Volume – Expected regular monthly throughput.

<sup>5</sup> Require Interface Module and Light Production Finisher

<sup>6</sup> Pending

For more detailed specifications, go to [www.xerox.com/560-570-Specs](http://www.xerox.com/560-570-Specs).

To view a product video, visit [www.xerox.com](http://www.xerox.com). Build and configure your own Xerox® Colour 560/570 Printer at [www.buildyourownxerox.com](http://www.buildyourownxerox.com).

